

Installation Instructions for CC-NOSING 83-40447L for Step Edges and the Leading Edge of Landings

Make sure the step and landing nosing edges are intact. Patch any brittle concrete. Remove any surface unevenness with a scraper. Sweep the surface area with a broom. Wet-clean the surface area with water and microfiber cloth (here: blue). If there is a lot of dirt present and area is grimy, additionally clean with Isopropyl Alcohol on microfiber cloth (here: green). Prior to material installation, surface area must be clean, dry and dust-free.



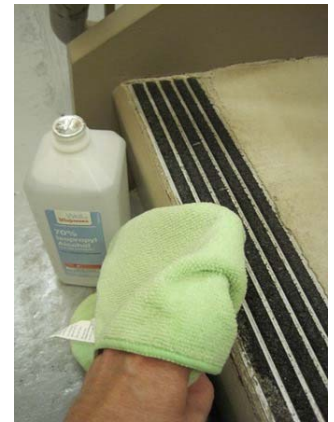
Firm 1-inch Scraper



Brush Clean



Wet Clean with clean Water



Isopropyl Alcohol clean

Place your Aluminum Nosing, your tools and supplies on the bottom landing of the flight that will get step edges installed. Begin installing at the top step and work your way down.

Make sure the installation surface is in proper FLAT condition to receive the Aluminum Nosing. Often along the outer step edges, the poured concrete rises. Do NOT rest the flat extrusion on that elevation.

It is instead preferred to leave a gap of typically 1-inch on the far outer step right and far outer step left to stay away from such common step unevenness. EXAMPLE: If your step width is 50 inches, install a 48-inch Aluminum Nosing with a 1-inch gap on the step left and the right.

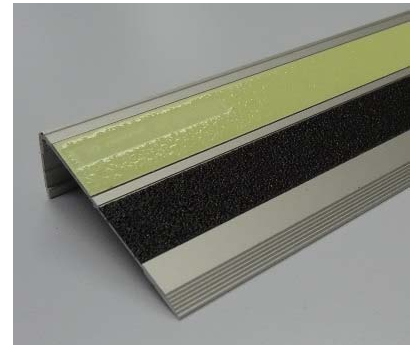
A space holder (e.g., made from cardboard or wood) speeds up maintaining the exact gap distance on each step.



Rising Concrete right before side wall



A Space Holder helps maintain exact distance



close-up View of 83-40447L

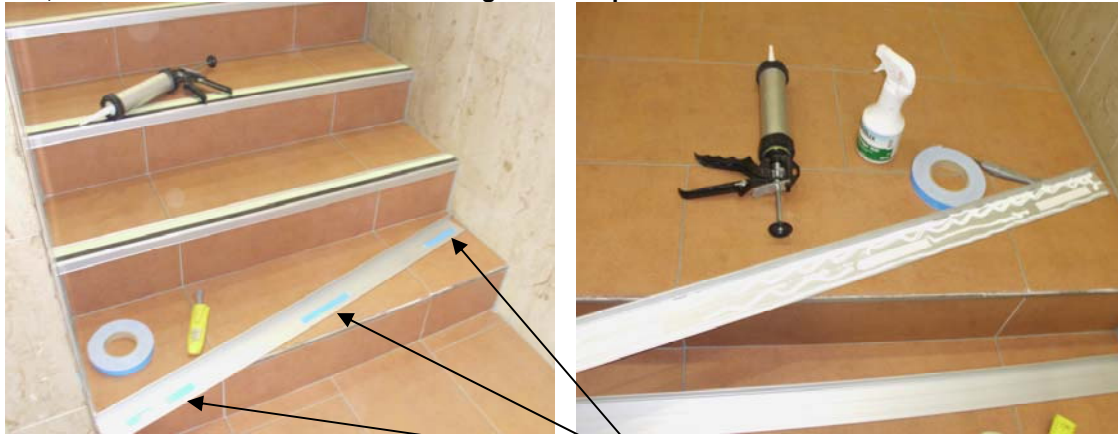
Measure step nosing width. Cut 90° angled Aluminum Nosing to appropriate length, using a metal saw with a non-ferrous aluminum-suited blade. Or you may have already ordered the Aluminum Nosing in the project-specific length.

Test-place the Aluminum Nosing on the step edge. Make sure it lies flat and makes contact over the entire step width.

continued on Page 2

Installation using Construction Adhesive

On Diamond Plate Stairs, no holes are needed. In other cases, the building owner may not want holes drilled. In these projects, adhesive-attach the Aluminum Nosing to the Steps:



It helps to put a couple of small strips of double-sided tape (see 3 lengths of adhesive-protecting blue silicone liner) on the back of the Aluminum Nosing to initially hold it in place while the construction adhesive is drying.

Apply a **generous, thick wavy bead** of construction adhesive (e.g., Loctite 375 Heavy Duty, Liquid Nails Heavy Duty, SIKA AT Universal) to the entire **back of the Nosing**, including near its edges and ends. This adhesive creates **THE BOND** for long-lasting performance. Secondly, it provides a cushion between aluminum and step surface to avoid a clanking sound when people walk on the steps.



Allow that thick layer of construction adhesive to cure for several hours before walking on the nosing. It helps to place a couple of masking tape strips across the installed Aluminum Nosing to hold it in place. Then remove those strips the next day. Using alerting tape, prevent occupants from walking up & down the stairs before that thick adhesive has cured to make sure the adhesive-only installed Aluminum Nosing stays in place and maintains its firm adhesive bond.

Installation using Screws

If the Aluminum Nosing will be installed with screws (not included in item unit – source separately), follow all steps described on Page 1.

83-40447L Aluminum Nosing is readily available withOUT screw holes and with a photoluminescent strip and a black anti-skid strip already inserted. By CUSTOM-ORDER, you may purchase 83-40447L in custom-lengths and optionally with counter-sunk holes. Please contact us for a custom quote: Toll-Free Tel. 888-737-6254

Assuming you did NOT order counter-sunk holes:

Test place the Nosing on the step edge to make sure it fits, lies flat and makes full contact with the step. Drill through the black anti-skid channel in those spots where you plan to screw-attach the Aluminum Nosing. Lift Nosing up and insert anchors into the concrete. Remove dust – installation area has to be dust-free.

Apply a **wavy bead** of construction adhesive (e.g., Loctite 375 Heavy Duty, Liquid Nails Heavy Duty, SIKA AT Universal) to the entire **back of the Nosing**, including near its edges, ends and around the screw holes. This provides a cushion between aluminum and stair surface to avoid a clanking sound when people walk on the steps.

Align Aluminum Nosing with screw holes and firmly press in place. Screw-attach Aluminum Nosing by drilling screws through those predetermined hole locations. Make sure screw heads are flush with black anti-skid on metal surface. Carefully wipe away any adhesive that might have squeezed out.