

California Building Code 2016: Chapter 11B-504.4.1 Contrasting Stripe requirement:
frequently referred to as "Striping for the Visually Impaired"

requires that Interior Stairs have the upper approach and lower tread marked by a stripe providing clear visual contrast. The stripe shall be a minimum of 2 inches wide placed parallel to the nose of the step or upper approach. The stripe shall extend the full width of the step or upper approach and be slip resistant.

In enclosed emergency staircases that fall under the California Building Code Chapter 10 requirements: **Means of Egress** Section 1025 **Luminous Egress Path Markings**, this **2-inch wide "Striping for the Visually Impaired"** can be accomplished in several different ways, depending on the frequency of stair use and the step surface.

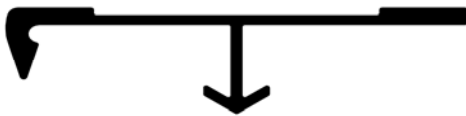
Option 1: Heavily used Emergency Staircases



Install PERMALIGHT[®] Aluminum Stair Nosing (Item: 83-40447L) on the upper approach (also called: landing step) and the lower tread (also called: last step in a flight).

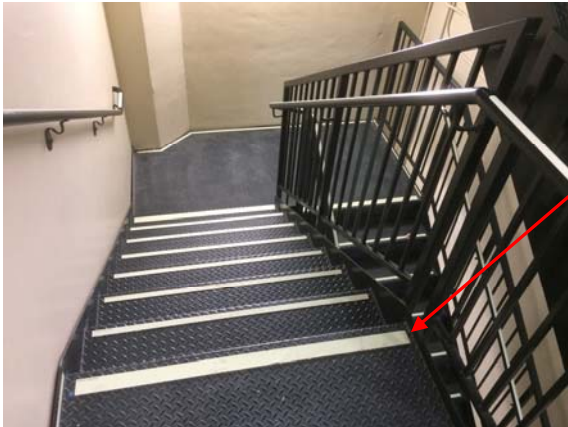
The **2-5/8 inch wide** elegant Aluminum Nosing works **great on concrete steps and on Diamond-Plate Metal Steps**, plus these durable step edge markings will resist heavy foot-traffic.

Freshly poured Concrete Steps/ New Construction: Heavily used Emergency Staircases



For mounting into freshly poured concrete / concrete in steel-pan step edges: Extruded Aluminum Stair Nosing (Item: 83-40457L) with a channel that holds a 1-9/16 inch (40 mm) wide Aluminum Strip in two-colored surface: 3/4-inch photoluminescent CC-ALU Aluminum with abrasive Anti-Skid surface and 3/4-inch black abrasive Anti-Slip insert.

Option 2: Medium use Emergency Staircases



Install PERMALIGHT[®] Item: 83-60227 2-inch wide Aluminum Strip on the upper approach and the lower tread, half inch in from the front of the step edge.

The 2-inch wide Aluminum Strip works great on typical concrete steps AND is also suited for Diamond-Plate Metal Steps.

Option 3: Medium use Emergency Staircases – NOT for Diamond-Plate Steps



Install PERMALIGHT® 1-inch wide Aluminum Strip (Item: 83-60207) on the upper approach and the lower tread surface, half inch in from the front of the step edge. Then install a 1-inch wide Black Anti-Slip Tape (Item: 83-3103M60) next to the 1-inch wide Photoluminescent Aluminum.

These two 1-inch pieces next to one-another create the required 2-inch visual contrast. The black Anti-Slip Tape will **NOT** work on Diamond-Plate Metal Steps. See Option 4:

Option 4: Medium use Emergency Staircases – Diamond-Plate Metal Steps and Landings



If you have Diamond-Plate Metal Steps, install PERMALIGHT® 1-inch wide Aluminum Strip (Item: 83-60207) on the upper approach and the lower tread surface, half inch in from the front of the step edge.

Then **paint** a 1-inch wide Black Stripe next to the 1-inch wide Photoluminescent Aluminum strip. These two 1-inch lines next to one-another create the visual contrast required.

Option 5: Light-Use Emergency Staircases with Concrete Steps (NOT Diamond-Plate Steps)



Install PERMALIGHT® 2-inch wide Anti-Slip Tape (Items: 83-0780 + 83-0780L). This anti-slip tape is **ONLY** recommended on straight, smooth concrete steps and you shall use a Primer underneath. Alternatively install 1-inch wide Anti-Slip Tape (Items: 83-1780 + 83-1780L) on the landing step and the lower tread. Then install 1-inch wide Black Anti-Slip Tape (Item: 83-3103M60) or paint a 1-inch line of black Paint next to the 1-inch wide Photoluminescent Anti-Slip Tape. These two 1-inch Stripes next to one-another create the visual contrast required. Neither the photoluminescent Anti-Slip Tape nor the black Tape work on Diamond-Plate Metal Steps!!!

IMPORTANT

Make sure you follow all the surface preparation steps and accessories instructions that are covered in our detailed PDF-Installation Instructions, downloadable from our website

<https://www.americanpermalight.com/ibc-ifc-compliant-ul1994-listed-egress-path-markings/> or available via email: info@AmericanPermalight.com